

Interiors
Patchwork
perfection

Upcycle old items into
unique showpieces
page 11



Lifestyle
Hook, line
and sinker

Fish from your front
door at these homes
page 7



Self-build
Living on
McCloud nine

Confessions of the
'Grand Designs' guru
page 4

LUXURY HOMES
HOTSPOTS
NEWS
EXPERT ADVICE
BARGAIN HUNTER

PROPERTY



Reinventing the bungalow

Ruth Bloomfield meets the architects who are pioneering low-level luxury by building single-storey showstoppers designed to impress

HOTSPOTS

Closest couture

In preparation for the Met Gala, one of the year's biggest high-fashion nights, *Isabelle Fraser* hunts down the most stylish dressing rooms fit for Anna Wintour and friends



Brighton
Arundel Terrace
Price: £3million

In one of Brighton's most famous Regency terraces is this five-bedroom house with views straight out to sea. The white stucco property is made up of the main house, plus three separate self-contained apartments. The grand house has wood panelling, high ceilings and elegant, old-fashioned interiors. There is a small back garden and a large roof terrace.
Agent: Mignon Mackay (01273 670067, m@hommackay.com)



Nine Elms
Embassy Gardens
Price: £4.5million

Sitting on the 16th and 16th floors of the Embassy Gardens development is this duplex penthouse, with views over the Thames towards the Houses of Parliament and beyond. It has three bedrooms, with open-plan living space

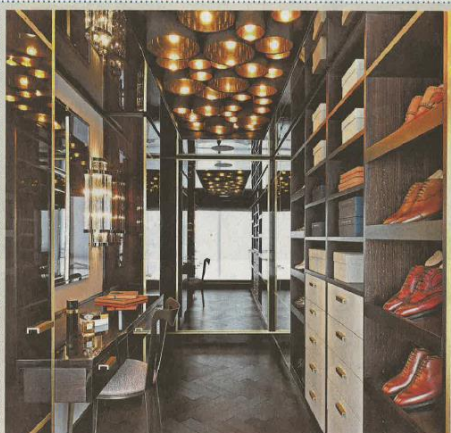
and a spiral staircase to connect the two floors. On the top floor there is a terrace, and residents have access to a swimming pool, gym and cinema room in the complex.
Agent: Johns & Co (020 7481 0600, johns@jc.co.uk)



Westminster
Queen Anne's Gate
Price: £19.5million

Built in 1704, this Grade I listed town house overlooks St James's Park, and has five bedrooms. It has been kitted out in bespoke joinery and luxury fittings, and has a cinema room and a wine cellar. The kitchen has French doors which open on to a big terrace

surrounded by huge, mature trees. Upstairs, the dressing room has plush carpets and its own chandelier, and more than enough storage for even the biggest shoe collector.
Agent: Denters (020 7590 9576, denters.co.uk)



BEST OF THE BUNCH

St James's
Jermy Street
Price: £7.5million

Apolly situated on Jermy Street, the centre of London's bespoke menswear industry, is this two-bedroom flat. It sits in Beau House, which has been developed by Dulacase to produce an apartment as sharply designed as the suits made in the shops downstairs. It is named after Beau Brummell, the 18th-century

dandy. Inside there are extravagant marble floors and fireplaces and hi-tech touches such as bespoke lighting. In the dressing room there are walnut lacquered wardrobes, brushed brass and polished nickel trompengerie, and more than enough storage for even the biggest shoe collector.
Agent: Knight Frank (020 7469 1032, info@kfrank.co.uk) and CBRE (020 7240 2255, cbr.co.uk)



Mayfair
Crosvenor Street
Price: £10.75million

With two dressing rooms, this is the ultimate pad in which to get ready for a party. The three-bedroom apartment, which is lateral and full of light, has been renovated by Hicky and Rigby. There is even Latron lighting, to check your outfit works in all light.
Agent: Carter Jonas (020 3731 4856, carterjonas.co.uk)



Essex
Holder's Green
Price: £3.8million

New Barn Hall is a Thirties country house filled with amenities such as a heated outdoor pool, games room and tennis court. There are seven bedrooms, two of

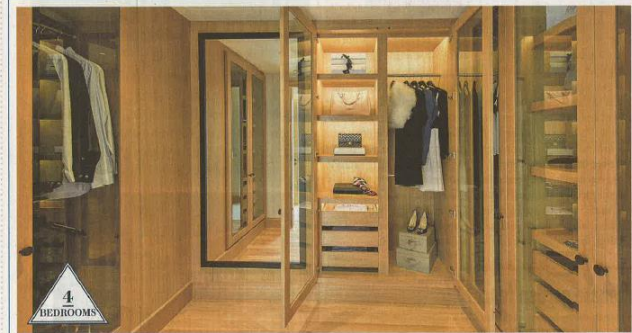
which are currently being used as a self-contained flat, as well as a detached cottage. The house has exposed beams and a grand entrance hall, and the master bedroom has a large dressing room, which is filled with light.
Agent: Mullick Wells (01279 755400, mullicks.co.uk)



South Kensington
Harrington Road
Price: £8,000 per week

The penthouse of Petersham House has three bedrooms and is designed in a lateral way to increase the feeling of space. There are floor-to-ceiling windows that flood the apartment with light. Each room, including the bedrooms, have views of the

surrounding trees and rooftops. Outside, there is a wraparound balcony, with a seating area and great views. There is a grand dressing room adjoining the master bedroom, which is filled with mirrored surfaces. The interiors throughout are luxurious, with chandeliers and marble.
Agent: Strutt & Parker (020 3504 5463, struttandparker.com)



Westminster
John Islip Street
Price: £8.35million

It faces north west, with views over the Houses of Parliament. A large living dining room, with windows filling an entire wall, opens on to a large terrace. Climb the stairs to the four bedrooms, one of which has a grand dressing room leading on to a master en-suite bathroom.

There are luxurious touches throughout the apartment: it has parquet floors and bespoke joinery. The development, split into two buildings, is surrounded by gardens. Inside, there is a swimming pool, gym and sauna, and the apartment comes with two parking spaces in the underground car park.
Agent: Berkeley (020 3504 8381, berkeleygroup.co.uk)



Earl's Court
Old Brompton Road
Price: £1.395million

Inside Beatrix House is this one-bedroom "turnkey" apartment, which is ready to move in to and would be a handy pied-à-terre. It has decadent interiors, with satin, bespoke furniture with bevelled glass and Madagascan ebony joinery, chandeliers and marble throughout. It also has hi-tech touches, such as Sonos and a mirror television. The dressing room has custom-made joinery and well-placed mirrors to expand the cosy space for every fashionista.
Agent: Denters (020 7838 0108, denters.co.uk)

